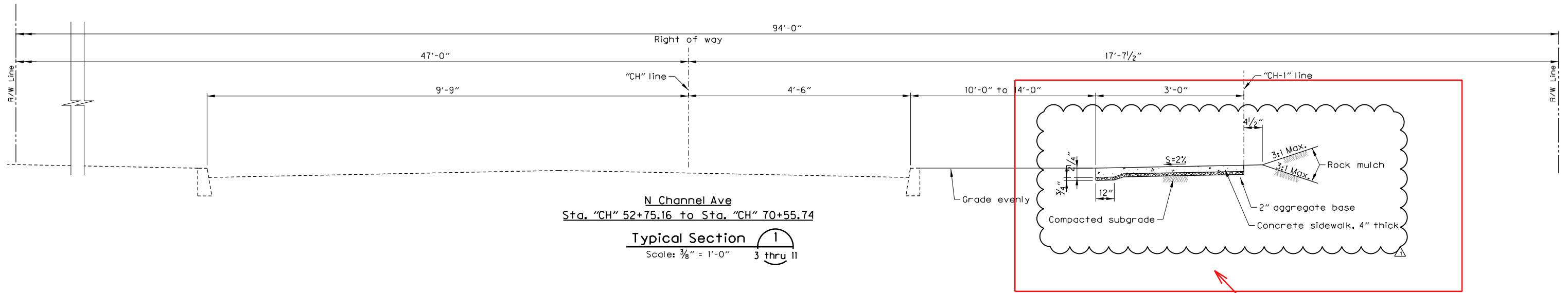
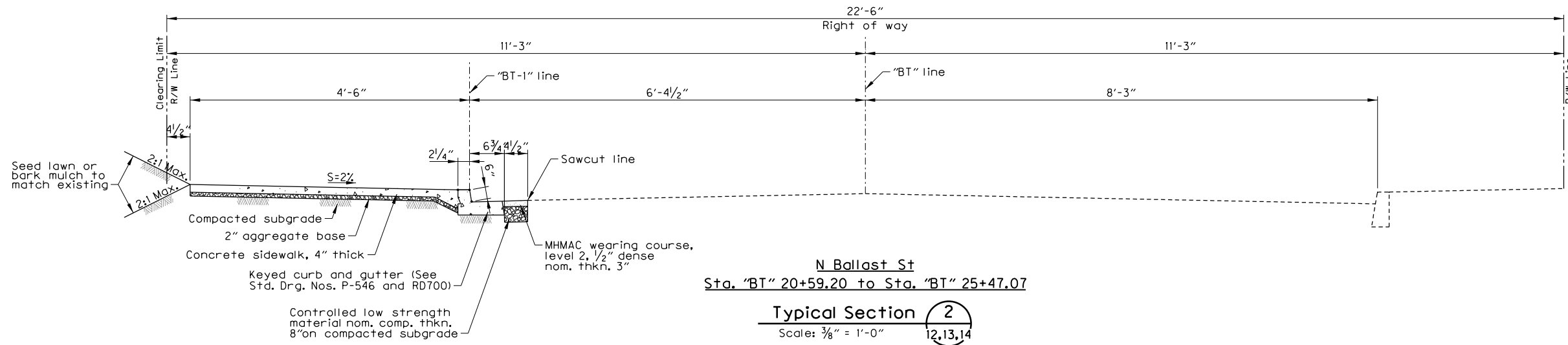


PE PHASE
e.g. ADDENDUM



"CLOUD" REVISION AREA AND Δ



SPECIFY REVISIONS WITH REV. #, SUMMARY AND DATE

EOR INITIALS

PEER REVIEWER

EOR STAMP (COP OR CONSULTANT)

NEED APPROVAL SIGNATURES

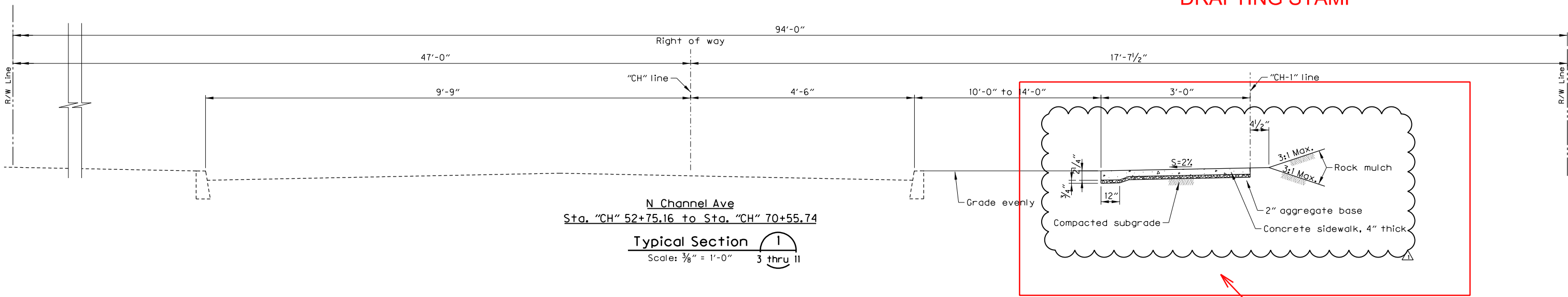
Plot Date: 8/16/2017 9:53:48 AM Filename: C:\Users\jtd\Desktop\jtdmis_Example.dgn

NO.	DATE	DESCRIPTION	APPROVALS:				N.E. 47th Ave: Columbia Blvd. - Cornfoot Rd. Typical Sections	1/4 SECTION 2841,2842 2941,2942 PROJECT NO. PBOT T00539 BES E10853 SHEET NO. 2A
3/12		Addenda #1	DESIGNED BY: N. Blanchard CAD BY: C. Sheerer CHECKED BY: J. Joe DATE APPROVED: June 2017 DIV. ENGINEER: S. Townsen					

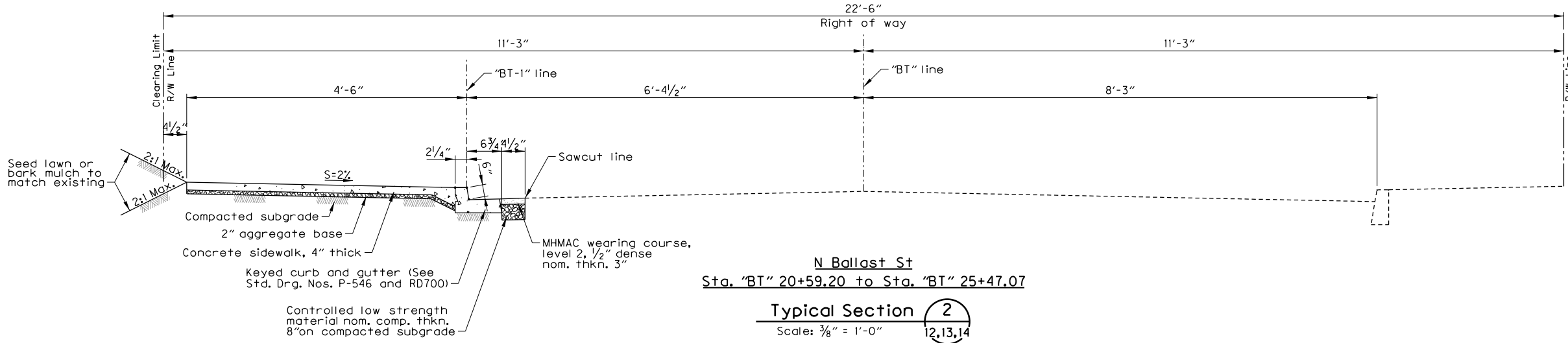
CE PHASE
e.g. CCO ATTACHMENT

REVISED DRAWING
SEE ORIGINAL CONTRACT DRAWINGS
FOR APPROVALS

**ADD ELECTRONIC
DRAFTING STAMP**



**"CLOUD" REVISION
AREA AND Δ**



**SPECIFY REVISIONS
WITH REV. #,
SUMMARY AND DATE**

EOR INITIALS

PEER REVIEWER

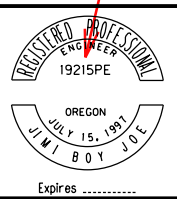
**EOR STAMP
(COP OR CONSULTANT)**

**NO APPROVAL SIGNATURES REQUIRED
(COVERED BY STAMP ABOVE)**

Plot Date: 8/16/2017 9:53:58 AM Filename: C:\Users\j1j\Desktop\j1jmis_Example.dgn

NO.	DATE	DESCRIPTION	APPR.
Δ 3/12		Addenda #1	

DESIGNED BY N. Blanchard	DATE APPROVED June 2017
CAD BY C. Shearer	DIV. ENGINEER S. Townsen
CHECKED BY J. Joe	



APPROVALS:	
SUPERVISING ENGINEER	REG. PROF. ENGR. NO. 14956PE
CITY ENGINEER	REG. PROF. ENGR. NO. 51538PE

PBOT
PORTLAND BUREAU OF TRANSPORTATION
STEVE NOVICK
STEVE TOWNSEN, P.E.



N.E. 47th Ave: Columbia Blvd. - Cornfoot Rd.

Typical Sections

1/4 SECTION 2841,2842 2941,2942
PROJECT NO. PBOT T00539 BES E10853
SHEET NO. 2A