






WORKSHOP OUTLINE

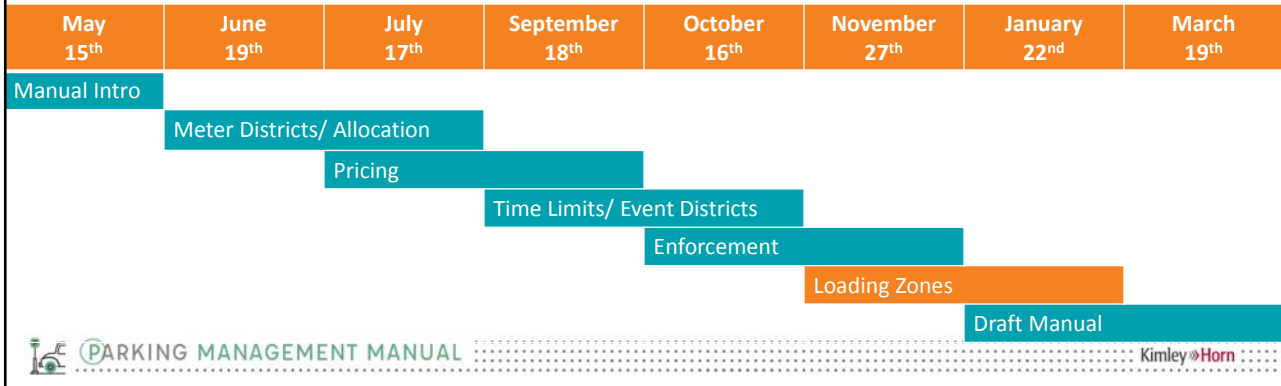
- Meeting Overview
- SAC#5: Enforcement
 - Updates Based on Feedback
- Focus Area #1: Truck Loading Zones
 - Background and Intro
 - Committee Guidance
- Wrap-Up



FOCUS AREAS AND SCHEDULE

- | | | |
|---|--|---|
| <p>1. Meter Districts/APPPs</p> <ul style="list-style-type: none"> • Establishing New Districts • Meter Revenue/APPP Surcharge Allocation Process | <p>2. Pricing and Time Limits</p> <ul style="list-style-type: none"> • Performance-Based Pricing/Time Limits • Time Limit Exception Process • Event Districts | <p>3. Enforcement</p> <p>4. Loading Zones</p> |
|---|--|---|



MEETING LOGISTICS

- Today: Two Key Focus Areas
- Use Name Card to Request Floor
- Recognize We Need to Hear from Everyone



Portland Freight Committee



PORTLANDERS FOR PARKING REFORM

SAC #5 RECAP

Enforcement

RECAP – UPDATES BASED ON WHAT WE HEARD LAST TIME

- Detailed data for **warnings** added, capture rate redefined to include warnings
- Added **capture rate guidelines** for select violation types to provide additional context

• Meter Violation:	30-40%
• Loading Zone:	8-12%
• Overtime Parking (Time Limit):	8-12%
• Area Parking Permit Required:	3-12%

Kimley»Horn

FOCUS AREA

Truck Loading Zones

TRUCK LOADING ZONES

- What are the issues?
 - No standard process for reviewing/approving TLZ requests
 - 44 separate signage designations
 - No guidance on default placement of TLZs
 - Lack of data on existing TLZS
- Committee's charge
 - Establish guidance for reduced number of standard Loading Zone sign options
 - Establish guidance for preferred locations for TLZs
 - Inform TLZ review process

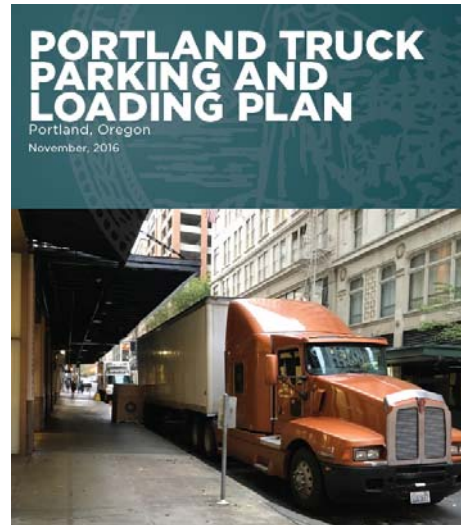
BACKGROUND – TRUCK PARKING AND LOADING PLAN (2016)

No Policy Changes Required

1. Develop a TLZ Review Process
2. Enhance TLZ Enforcement
3. Eliminate Free Truck Parking
4. (Planning Division) Reevaluate Off-Street Loading Requirements

Policy Changes Required

5. Establish Commercial Loading Zones
6. (Planning Division) Establish Truck Loading Streets
7. (Planning Division) Establish Peripheral Distribution Centers
8. (Planning Division) Establish Drop-box Areas
9. (Planning Division) Develop a Cargo Bike Policy



DESIRED OUTCOMES OF UPDATED TLZ PROCESS

1. Establish truck loading zones in areas that are as **close to the receiving areas** of shipping/receiving businesses as possible
2. Designate truck loading zones to **balance the various user demands**.
3. Consider greater use of **“combination zones”** to maximize the efficiency of truck loading zones to meet demand and capture capacity in periods of low or non-use for freight delivery.
4. **Enforcement** of parking and loading rules should be rigorous.



DRAFT GUIDANCE

Truck Loading Zones



PARKING MANAGEMENT MANUAL



PBOT
PORTLAND BUREAU OF TRANSPORTATION

RECOMMENDED IMPLEMENTATION ELEMENTS

1. Establish 3 to 5 Standard Loading Zone Sign options
2. Maximize use of combination zones for both TLZ and customer/visitor use

TLZ Designation	Combination Zone Option	Comments
7AM – 7PM MON – SAT	Yes	Open for any use 7PM – 7AM.
7AM – 11AM MON – SAT	Yes	Combination Zone option 11AM – 7PM. Unregulated SUN.
7AM – 2PM MON – FRI	Yes	Combination Zone option 2PM – 7PM. Unregulated SAT/SUN.
10 PM – 7AM ALL DAYS	Yes	Combination Zone option 7AM – 7PM.
ALL HOURS ALL DAYS	No	Requires business to demonstrate need for 24-hour zone.

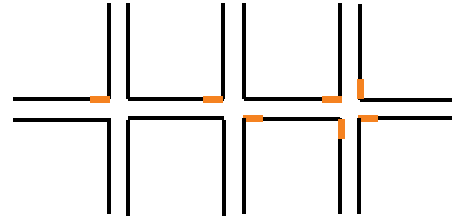


PARKING MANAGEMENT MANUAL

Kimley Horn

RECOMMENDED IMPLEMENTATION ELEMENTS

3. Establish preferred location on block
 - Preferred location: At intersections, far side



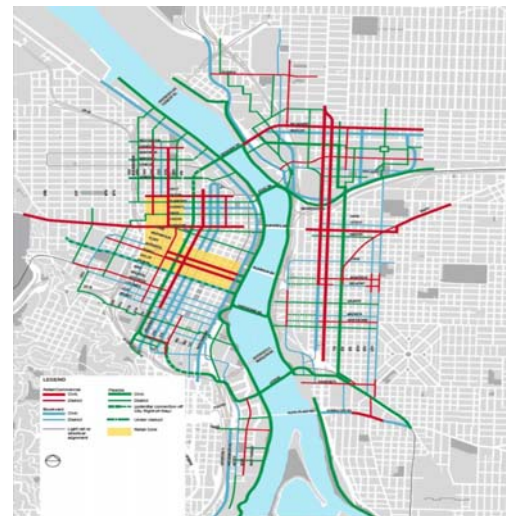
4. Maintain current 30-minute time limits in truck loading zones (during TLZ designated hours)



RECOMMENDED IMPLEMENTATION ELEMENTS

5. Limit TLZs on certain types of streets

TLZ Designation	Recommended Streets	Not Recommended
7AM – 7PM MON – SAT	Blue – Boulevard / Undesignated	Green - Flexible
7AM – 11AM MON – SAT	Blue – Boulevard / Undesignated	Green - Flexible
7AM – 2PM MON – FRI	Blue – Boulevard / Undesignated	Green - Flexible
10 PM – 7AM ALL DAYS	Red – Retail/Commercial	Green - Flexible
ALL HOURS ALL DAYS	Red – Retail/Commercial / Blue – Boulevard / Undesignated	Green - Flexible



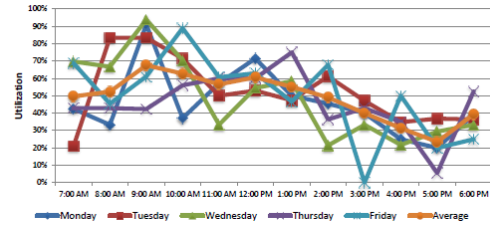
RECOMMENDED IMPLEMENTATION ELEMENTS

6. Initiate an Annual Review Process to Confirm On-Going Need for TLZs

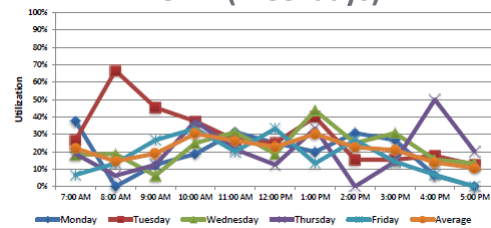
Performance Metrics

- Occupancy
- Turnover
- Duration of stay
- Violation rates
- Peak hour of use

CBD (Weekdays)



CEID (Weekdays)



WRAP UP



WRAP UP

- | | | |
|---|--|---|
| <p>1. Meter Districts/APPPs</p> <ul style="list-style-type: none"> • Establishing New Districts • Meter Revenue/APPP Surcharge Allocation Process | <p>2. Pricing and Time Limits</p> <ul style="list-style-type: none"> • Performance-Based Pricing/Time Limits • Time Limit Exception Process • Event Districts | <p>3. Enforcement</p> <p>4. Loading Zones</p> |
|---|--|---|

