

MAP 2: RAINIER / ST HELENS

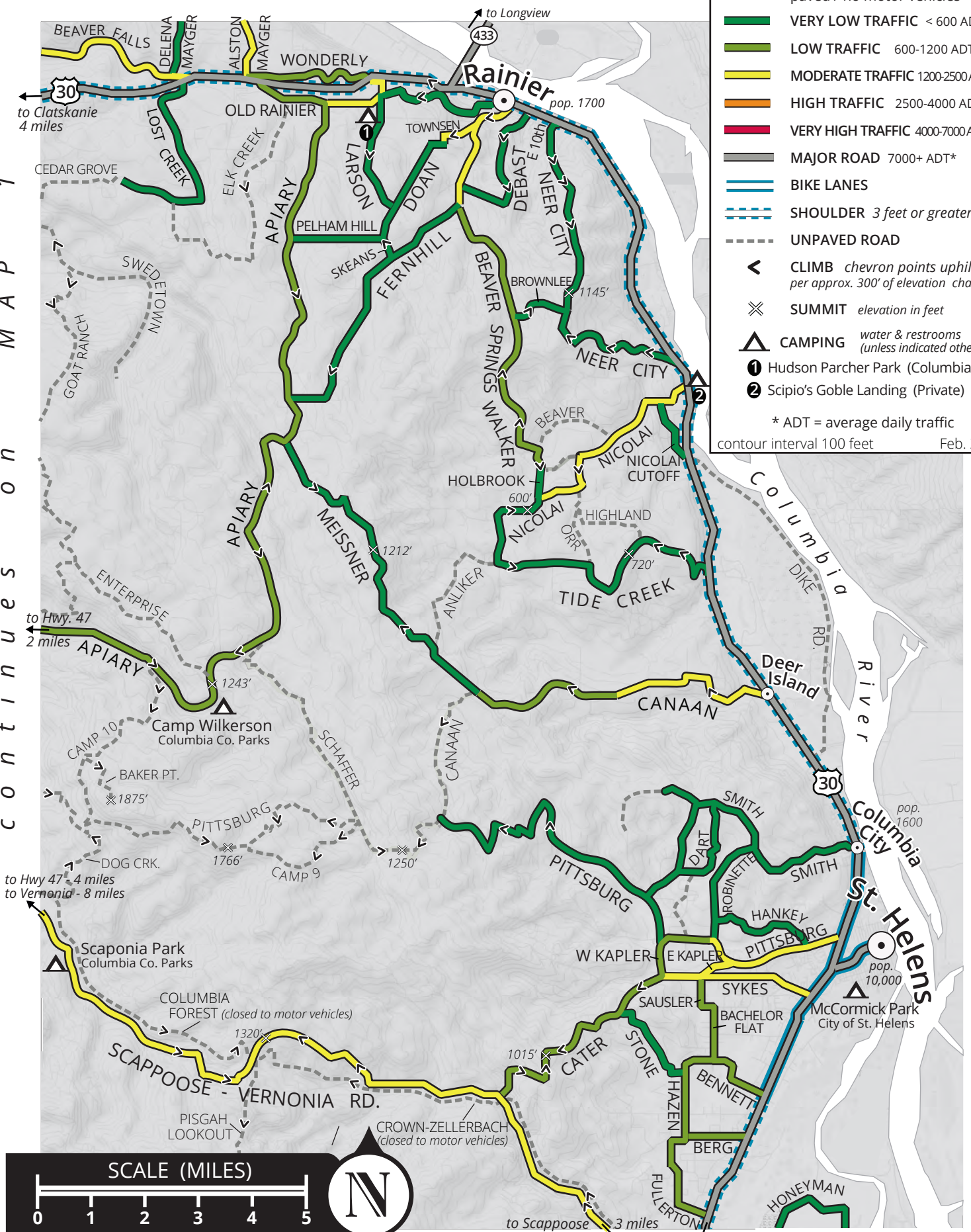
PORTLAND AREA RECREATIONAL CYCLING MAPS

LEGEND

- ⋯ MULTI-USE PATH
paved / no motor vehicles
- VERY LOW TRAFFIC < 600 ADT*
- LOW TRAFFIC 600-1200 ADT*
- MODERATE TRAFFIC 1200-2500 ADT*
- HIGH TRAFFIC 2500-4000 ADT*
- VERY HIGH TRAFFIC 4000-7000 ADT*
- MAJOR ROAD 7000+ ADT*
- BIKE LANES
- - - SHOULDER 3 feet or greater
- - - UNPAVED ROAD
- ◀ CLIMB chevron points uphill
per approx. 300' of elevation change
- ✕ SUMMIT elevation in feet
- △ CAMPING water & restrooms
(unless indicated otherwise)
- ① Hudson Parcher Park (Columbia Co.)
- ② Scipio's Goble Landing (Private)

* ADT = average daily traffic
contour interval 100 feet Feb. 2014

c o n t i n u e s o n M A P 1



SCALE (MILES)

0 1 2 3 4 5

1 : 150,000 / 1" = approx. 2.4 miles

N

c o n t i n u e s o n M A P 3